

Safran Campus

A scalable industrial, R&D, and office complex designed to adapt to the processes of tomorrow.

CLIENT

Safran

TEAMS

Safran ISCE
Autumn | Patriarche (General firm, Lead contractor)
Patriarche (Architecture, Landscape, QEB, BIM)
Partners :
WSP, Actemium

Factory Campus (SAM)
Autumn | Patriarche (General firm, Lead contractor)
Patriarche (Architecture, Landscape, QEB, BIM, TCE, Cost assessment)
Partners :
Vinci Energie

Credits :
Photos Usine Campus ©Romuald Nicolas,
ISCE ©Vincent Le Gallic

KEYPOINTS

Scalability to adapt to evolving industrial processes.
Multidisciplinary expertise.
Turnkey project delivery.
Integration within an existing site.

ENVIRONMENTAL PERFORMANCE

E2 level of the E+C- label
Safety and environmental protection:
a “high-quality construction site” approach.

As part of a comprehensive strategy to modernize and optimize its industrial facilities, Safran — a major player in high-tech sectors such as aerospace, space, and defense — has launched a transformation of its Haillan site, located on the outskirts of Mérignac Airport, within the Bordeaux Métropole area.

The first milestone of this transformation was the completion of the Safran ISCE Ceramics building in 2018. This scalable industrial complex, a technological showcase for the group, was designed to support R&D in the development of new materials while enabling their production on an industrial scale. Its flexible layout was conceived to accommodate the evolution of technologies and processes.

In 2021, Safran took a further step by creating a Campus Factory dedicated to Additive Manufacturing activities. This breakthrough technology revolutionizes production methods by shifting from material removal to material addition, thereby rethinking the entire industrial process. Connected to the Ceramics building via an optimized road network, the Campus Factory is part of a broader vision of spatial cohesion and streamlined flows, reinforcing the ambition of an integrated, future-oriented site.



Typology	Construction cost	Status
Industry, Laboratories, Offices	60.8 M€	Delivered in 2018 and 2021
Surface	Location	Attribution mode
32 540 m² GFA	Le Haillan, France	Design and Build

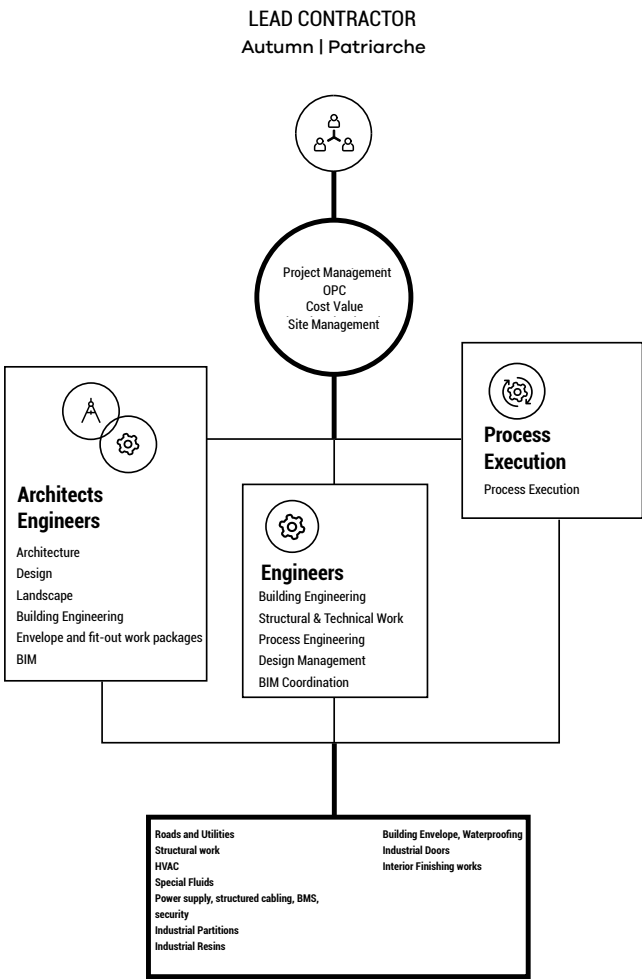
A collaborative design approach



Both projects were delivered under a design and build contract, with Autumn | Patriarche acting as the general contractor, ensuring firm commitments on cost and schedule. This approach fostered a strong partnership with Safran, built on transparency, active listening, and co-construction.

For the **ISCE building**, a single contract was established, covering the facility, processes, and industrial equipment, in a comprehensive turnkey approach. This method enabled proactive project management, with continuous attention to architectural and technical quality, as well as cross-disciplinary coordination.

The **Campus Factory** continued this collaborative approach, integrating environmental performance objectives (E2 level of the E+C- label), safety, and long-term sustainability from the design phase. It also followed a structured BIM methodology, supporting both construction quality and long-term asset management.



Our teams rely on the strength of our model: an integrated, multidisciplinary approach.



An integrated, scalable industrial complex

Both buildings were designed to accommodate the evolution of industrial processes:

- ISCE Ceramics is based on a modular “string of pearls” layout, organized around utility buildings. This structure allows for longitudinal or transverse extensions, and even duplication along symmetry axes. The process areas are bathed in natural light, while the office spaces can be arranged as open-plan or enclosed offices, depending on requirements.
- The Campus Factory adopts a layout of simple, sequenced volumes, differentiating functions (Utilities, Process, Offices). The process area features a double-height space with an optimized technical plenum, while the office zone includes generous spaces (lobby, agora, cafeteria) and a visitor gallery overlooking the heart of the process.



The two buildings engage in a shared architectural dialogue, featuring metallic façades, rhythmic volumes, and careful attention to visual impact. The whole complex is nestled within a wooded area, with surroundings designed as natural green spaces and a respectful approach to managing wetlands.

Parking and accessibility

The Usine Campus is complemented by a new parking area located to the southeast of the building, extending the existing parking and positioned in close proximity to the security post. This new facility provides 114 additional spaces, distributed as follows: 97 spaces in the main parking lot, 6 reserved for VIP visitors, 3 dedicated to people with reduced mobility—located closest to the office entrance—and 8 for maintenance staff, near the process area.

A pedestrian pathway ensures continuity between zones, guaranteeing simple and safe movement. The existing parking remains partially available for staff, thereby optimizing the site's overall capacity.



Safran Campus

Typology	Construction cost	Status
Industry, Laboratories, Offices	60.8 M€	Delivered in 2018 and 2021
Surface	Location	Attribution mode
32 540 m² GFA	Le Haillan, France	Design and Build