

Residential care home

Competition for the construction of a residential home for the elderly, comprising two buildings for care and independent living.

CLIENT

Gemeinde Schübelbach

TEAM

Patriarche (Architecture, Interior architecture, MEP Engineering, EBQ, Cost, BIM, Urban planning)

Partners:

PR Landschaftsarchitektur, RMB, HKG, HPlusS

KEYPOINTS

Load-bearing wooden facade.

Open to the city.

Flexible and optimized.

SUSTAINABILITY

Bio-sourced materials.

Bioclimatic building.

Plenty of room for plants.

The starting point of the project is to create a senior residence that is not isolated, but an active point in the urban cluster, in the life of the town. To this end, the two existing hornbeams have been preserved, as distinctive elements linking the site to the parish church and presbytery. The square thus creates a link with the town, becoming a place for living and meeting. The strategic location of the outdoor spaces was decisive in the emergence of two built volumes.

The project aims to meet the challenge of the program with two polygonal volumes that embody two different lifestyles: one independent (studios and apartments) and the other supportive (long-term care). However, they are linked by a transparent plinth that houses the common spaces. This allows light from the south to penetrate and flood the terrace with warm sunshine at lunchtime.

Both volumes are designed to be sufficiently compact to offer large outdoor spaces. The floor plans respond effectively to the required typologies and integrate with the scale of the village. By dividing the façade into several angles, the length, height and depth of the building are not perceived by passers-by. In this way, the proposed architectural form lies somewhere between a public building and a detached house, creating a lively dialogue with its surroundings.



Typology
Public, Health

Construction cost
22 M CHF

Status
Delivery 2028

GFA
6 500 m²

Location
Eisenburgstrasse, Switzerland

Project delivery
Private project management

Intentions

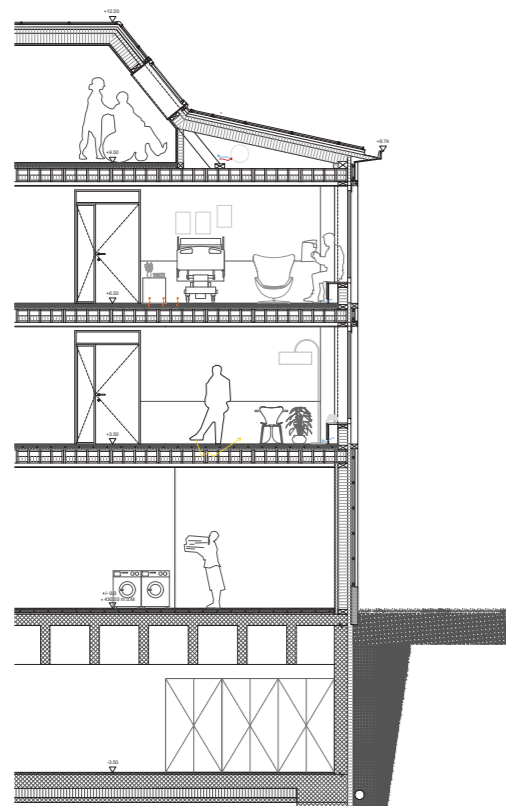
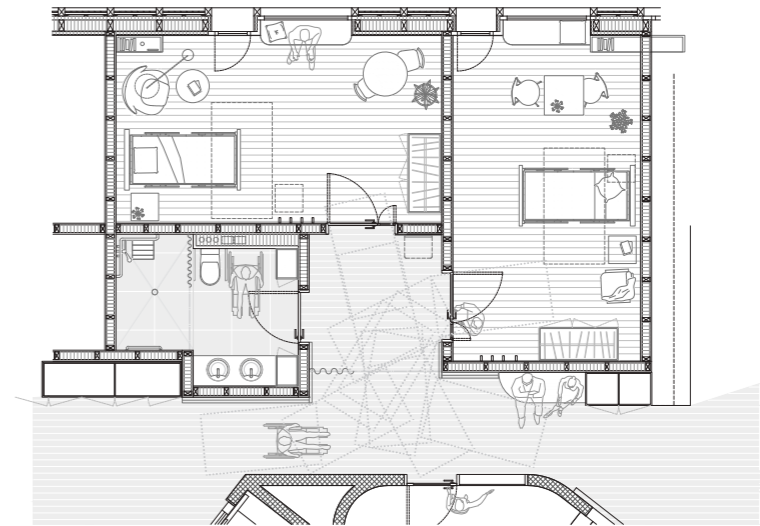
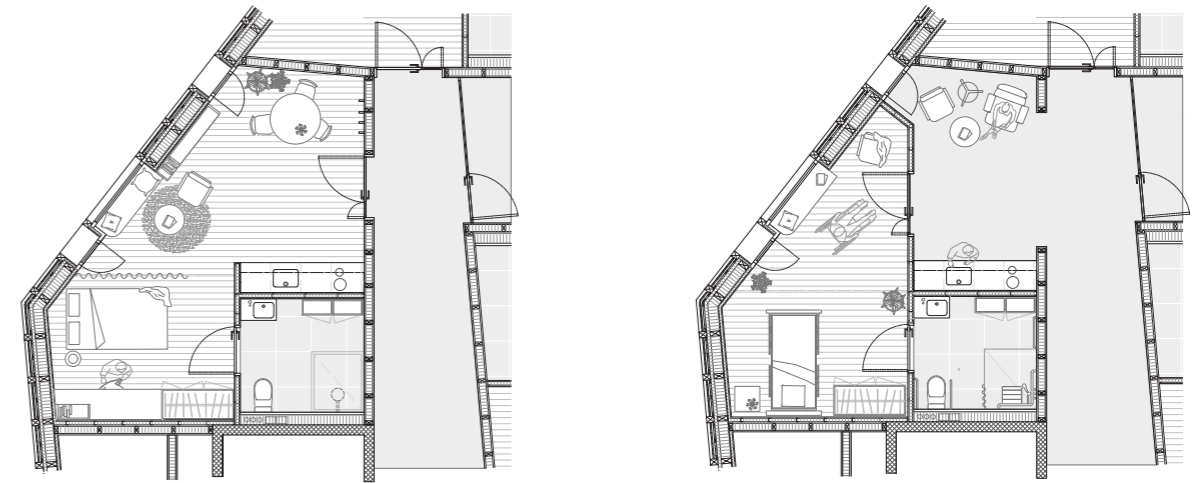
A flexible layout to create living spaces that are a pleasure to inhabit.

The load-bearing timber facade provides a flexible layout for both buildings.

On the care home side, the rooms are arranged in clusters, and the bathrooms shared by two rooms are arranged to create small vestibules that patients can use in different ways. Thanks to a curtain that provides privacy, this space can be transformed into a small chat room.

Each unit has three relaxation areas: a dining room, a lounge with views over the countryside and a loggia that gets plenty of sunshine all year round.

There are nine studios and six flats. The shape of the rooms has been designed in a variety of ways to individualise each home and offer a varied range of accommodation.





Residential care home

Typology
Public, Health

GFA
6 500 m²

Construction cost
22 M CHF

Location
Eisenburgstrasse, Switzerland

Status
Delivery 2028

Project delivery
Private project management