

# Residential care home

Competition for the construction of a residential home for the elderly, comprising two buildings for care and independent living.

**CLIENT**

Gemeinde Schübelbach

**TEAM**

Patriarche (Architecture, Interior architecture, MEP Engineering, EBQ, Cost, BIM, Urban planning)  
Partners:  
PR Landschaftsarchitektur, RMB, HKG, HPlusS

**KEYPOINTS**

Load-bearing wooden facade.  
Urban integration.  
Flexible building structure.

**SUSTAINABILITY**

Regional and ecological materials.  
Bioclimatic building.  
Generous outdoor spaces and preservation of existing trees.

The project aims to meet the challenge of the programme with two distinct polygonal structures that embody two different lifestyles: one independent (studios and flats) and the other supportive (long-term care). However, they are linked by a transparent plinth that houses the communal areas. This allows light from the south to penetrate and flood the terrace with warm sunshine at lunchtime.

The two volumes are designed to be compact enough to provide large outdoor spaces. The floor plans respond effectively to the required typologies and fit in with the scale of the village. By dividing the façade into several angles, the length, height and depth of the building are not perceived by passers-by. In this way, the proposed architectural form lies somewhere between a public building and a detached house, creating a lively dialogue. and a detached house, creating a lively dialogue with its environment.

A great deal of attention has been paid to the two hornbeams on the grounds, creating a signpost and reinforcing the area's unique identity. In this way, the square creates a link with the town, becoming a place to meet and interact.



Typology <b>Public, Health</b>	Construction cost <b>22 M CHF</b>	Status <b>Delivery 2028</b>
GFA <b>6 500 m²</b>	Location <b>Eisenburgstrasse, Schübelbach, Switzerland</b>	Project delivery <b>Follow-up order (project planning and execution)</b>



# Intentions

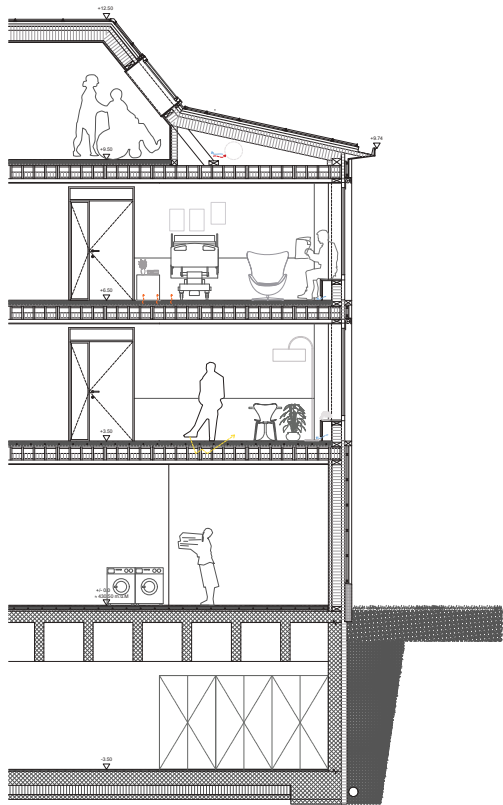
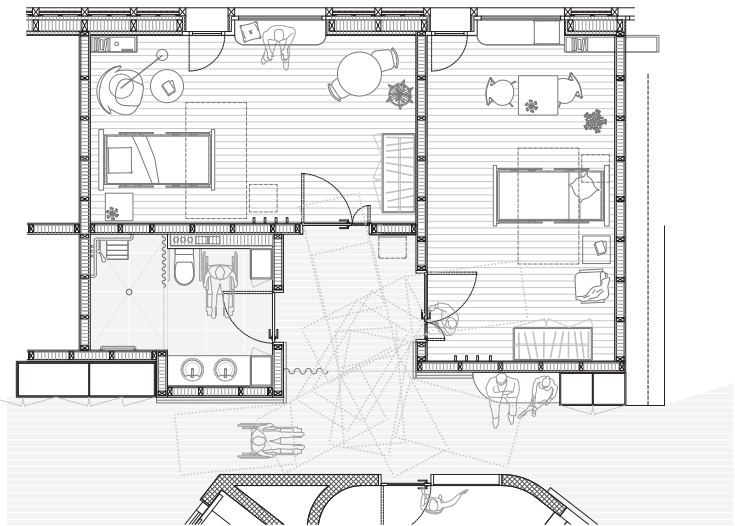
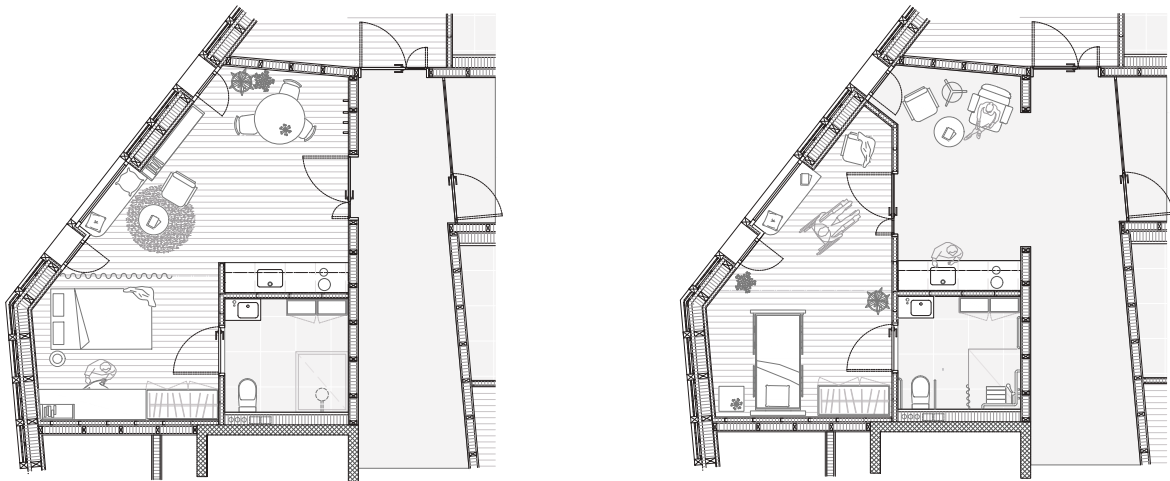
A flexible organisation to create living spaces in which you can act independently.

The load-bearing timber facade provides a flexible layout for both buildings.

On the care home side, the rooms are arranged in clusters, and the bathrooms shared by two rooms are arranged to create small vestibules that patients can use in different ways. Thanks to a curtain that provides privacy, this space can be transformed into a small chat room.

Each unit has three relaxation areas: a dining room, a lounge with views over the countryside and a loggia that gets plenty of sunshine all year round.

There are nine studios and six flats. The shape of the rooms has been designed in a variety of ways to individualise each home and offer a varied range of accommodation.







## Residential care home

Typology  
**Public, Health**

GFA  
**6 500 m<sup>2</sup>**

Construction cost  
**22 M CHF**

Location  
**Eisenburgstrasse, Schübelbach, Switzerland**

Status  
**Delivery 2028**

Project delivery  
**Follow-up order (project planning and execution)**