

House Boat

House Boat®, a design concept for adapting our construction methods to flood-zone areas.

CLIENT

SCI House-Boat

TEAM

Patriarche Group:
Patriarche (architecture, Interior architecture, landscape, Environmental Building Quality [EBQ], and BIM)
Patriarche Ingénierie (general construction and cost assessment)
Patriarche Creative (signage)
Partners:
Keops and Duverney

Located on the Savoie Technolac business park within a flood zone, this inland port, where ten houseboats are moored, is home to cutting-edge companies and business incubators.

The beauty of the site and its unique character led us to carry out a careful architectural study that would allow for the siting of tertiary sector activities in harmony with a natural environment to be preserved.

Built using a light metal framework on piles, the simple construction process makes them flexible and versatile. In this case, they flank a jetty, but this design concept can be adapted to other eco-sensitive sites by adapting the design.

KEYPOINTS

Lightweight structure.
Adaptable construction process.
Flood zone.
Recyclable and durable materials.

ENVIRONMENTAL PERFORMANCE

Preservation of the natural environment.
Lightweight constructions that can be dismantled.
Use of recyclable materials (steel, glass, wood, etc.)
Solar protection and comfort in summer.
Low-nuisance construction site.

Typology	Construction cost	Status
Offices and restaurant	2.3 M€	Delivered 2008
Surface	Location	Allocation mode
2,752 M² of floorspace	Le Bourget-du-Lac, France	Design and build



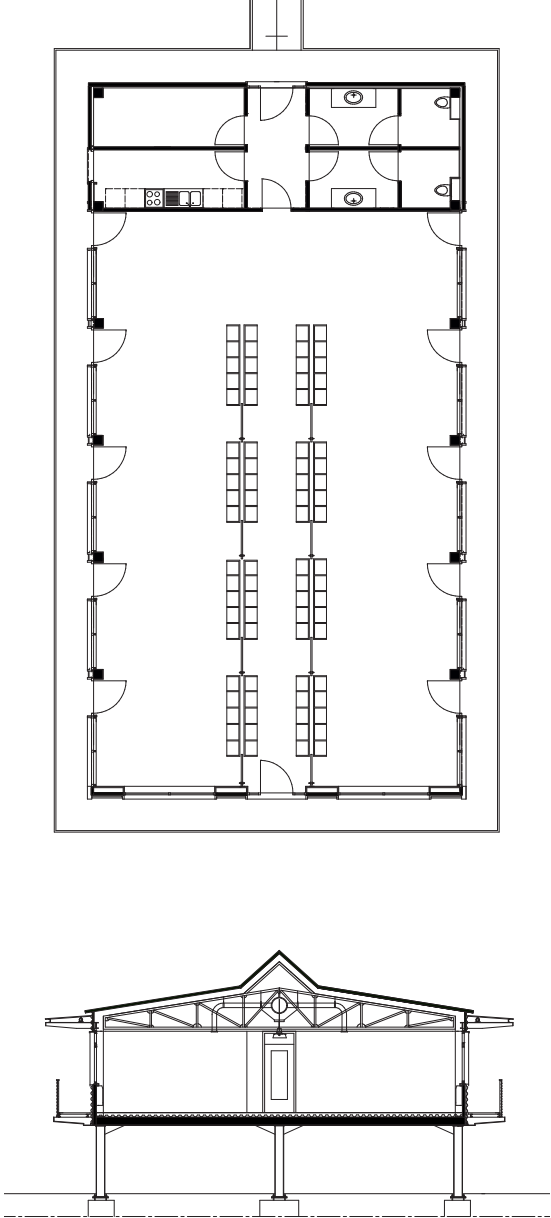
Principle ideas and objectives

The House Boat design is simple and can be multiplied and varied in length. The open plan design and external walkways offer great flexibility in terms of how the building can be used. They allow the space to be divided according to requirements, such as closed offices, open-plan space, storage, and workshops. The possibilities are endless.

The buildings project out from and flank a jetty, to which the link bridges and covered access walkways are linked. Made of metal frames, which are very light and easy to dismantle, the link bridges are made of zinc-treated steel to make them lighter and to limit rusting.

Everywhere, the bay windows capture the sun's energy in winter and are protected by wide roof overhangs that provide natural shade in summer, aided by the trees in the surrounding understory.

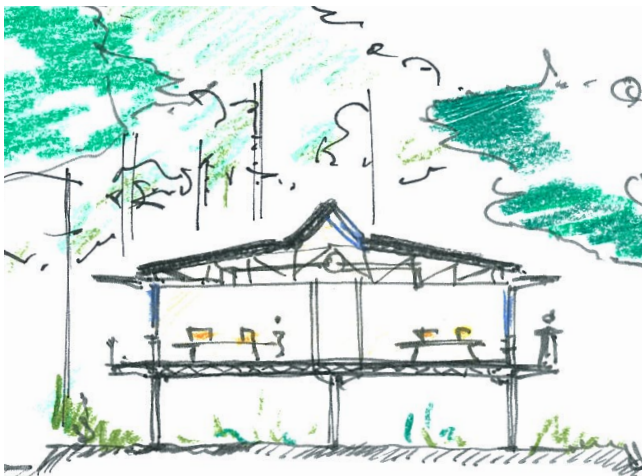
It's a very simple building, with the covered walkway there to allow for the cleaning of the windows. The roof provides protection from the sun and the slope of the roof allows the leaves to fall directly onto the ground (there are no gutters). The design was guided by its use and functionality.



“

In the summer, I was alone at the agency, feeling calm and open to ideas arising from my emotions. I thought that continuing to build by backfilling would be a mistake, and that it would be much more interesting to elevate the buildings, to put them above the lakeside landscape.

Jean-Loup Patriarche



Flexible office

House Boat is able to offer pleasant working environments for creative people, allowing interaction between different groups. This is the current trend in open innovation.

Thus, the workspaces and the way the workspaces are designed become a key ingredient in day-to-day success and productivity.



The working environment here strikes a careful balance between continuous human interaction, which allows everyone to do things better and faster, and the ability to work in a quiet environment.

The spaces also enable simple social encounters. A kitchen and a patio are available and open to all, enabling the organisation of after-work events or simple informal gatherings.

The project is a response to

- the need for flexibility among the various companies involved.
- the wish of some freelancers to be able to work in a place that retains the quietness of their homes while allowing them to meet other workers.
- the request of local authorities or public bodies that wish to offer a new type of facility (compared to business incubators and business centres) with modern and more desirable options for entrepreneurs.
- the possibility of building in areas with regulatory constraints and at risk of significant flooding.



The working environment strikes a careful balance constant human interaction and the ability to work in a quiet environment.





House Boat

Typology
Offices and restaurant

Surface
2,752 M² of floorspace

Construction cost
2.3 M€

Location
Le Bourget-du-Lac, France

Status
Delivered 2008

Allocation mode
Design and build