

Gasteig of Munich

The new Gasteig, one of the largest cultural centres in Europe;

CLIENT

Gasteig

TEAM

Patriarche Group :
Patriarche (Architecture)
Partners :
Plan 2, Kahle, Alto, Duck scéno, Heiner Luz

KEYPOINTS

Philharmonic Hall.
Library.
Art school.
Transparency.
Double skin.
Well-being.
Living exchange place.

The ambition is to bring it to the level of the largest international institutions. Our concept transforms the Gasteig into a true centre of practice and research dedicated to culture, able to produce live performance in the best possible conditions, to educate in the arts, in all forms, to provide access to knowledge and be a unique, contemporary space for creation. We do not know what the arts of tomorrow will look like, but we are convinced that only open, transparent, modular and inviting spaces will allow for their creative emergence. The restructuring of the centre is the moment to totally take down the walls and free spaces from their functions to create a space for living exchange.

Warmth, transparency and well-being are at the centre of our project.

Typology
Sport-Culture, Equipment

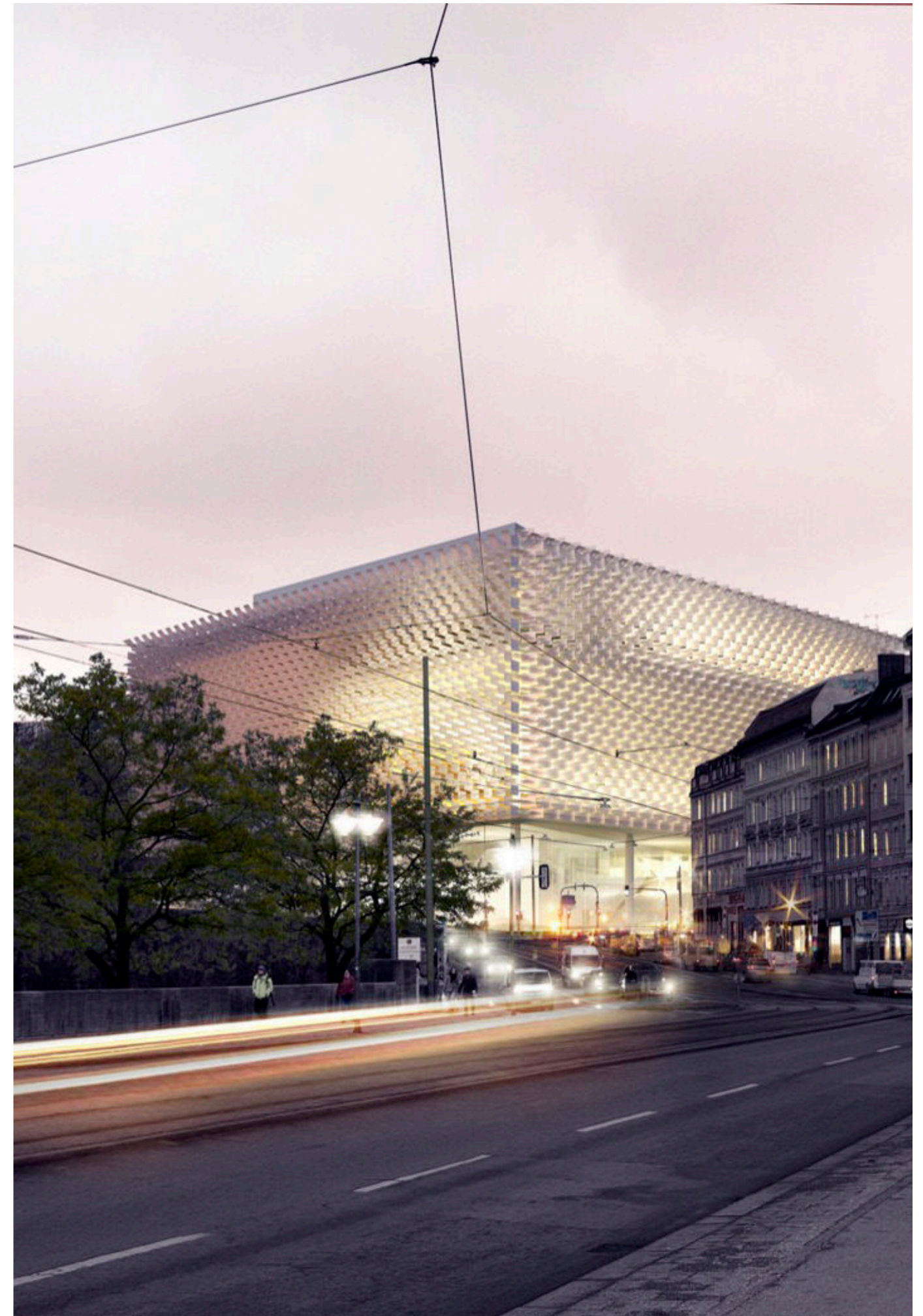
Construction cost
N-C

Status
Design Contest 2018

GFA
85 000 m²

Location
Munich, Germany

Project delivery
Design and production



Interior design

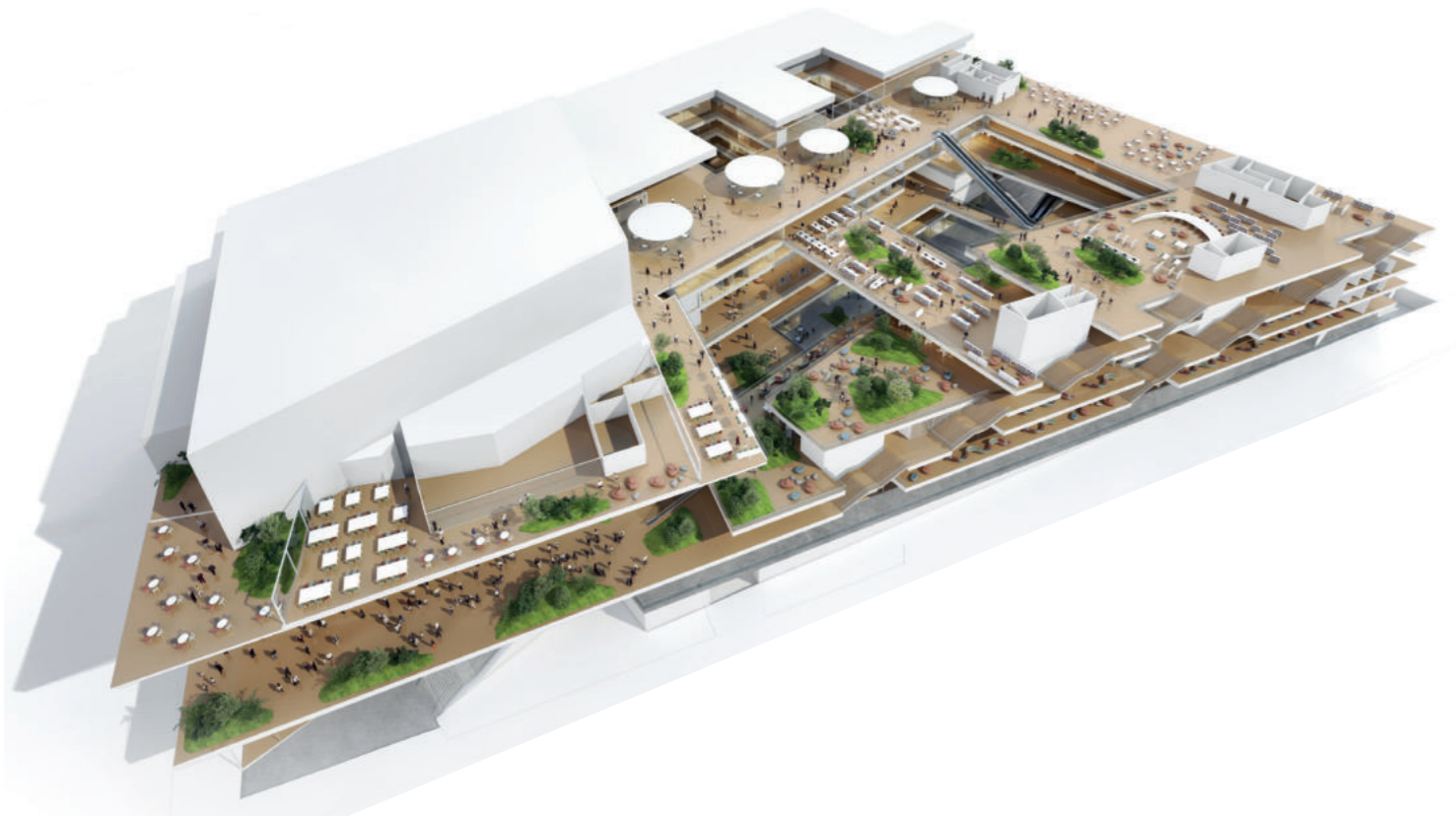
A canopy gathers all the spaces and functions under a unitary envelope which gives a strong and recognizable identity between all.

This unity is a symbol of the cohabitation of different artistic fields (installation, music, theater...).

At first sight monolithic, the form reveals itself to be a skin composed of elements that filter the light, to become more or less transparent depending on the angle of view. This skin undulates like a sound membrane. A poetry is then born from this random movement.

Under this undulating skin, the spaces are organized in interconnected platforms where the vegetation invites itself to compose peaceful atmospheres where everyone can work, read, have fun, eat, listen to music, play an instrument, learn...

Visitors will be blown away by the space, flooded with natural light, and by the human hive dedicated to the arts.



Atrium

The diagonal atrium constitutes the large general foyer. It is the place where everything is possible.

All of the functions of the space are visible and clear, in one look. The reception on the ground floor, 3 performance rooms on level 1, the philharmonic to the West and in a rising circular movement, the floors of the library, schools and workshop rooms on the top level. Each entity communicates with the others to encourage interdisciplinary exchange.



Gasteig of Munich

Typology
Sport-Culture, Equipment

GFA
85 000 m²

Construction cost
N-C

Location
Munich, Germany

Status
Design Contest 2018

Project delivery
Design and production
