

Eklo Hotels - Bastide

Located in the heart of an eco-neighbourhood, this eco-hotel pushes the envelope to better accommodate today's travellers.

CLIENT

EKLO HOTELS

TEAM

Patriarche Group:
Patriarche (Architecture, Environmental Building Quality [EBQ], and BIM)
Patriarche Ingénierie (General construction and cost assessment)
Partners:
Janréji

KEYPOINTS

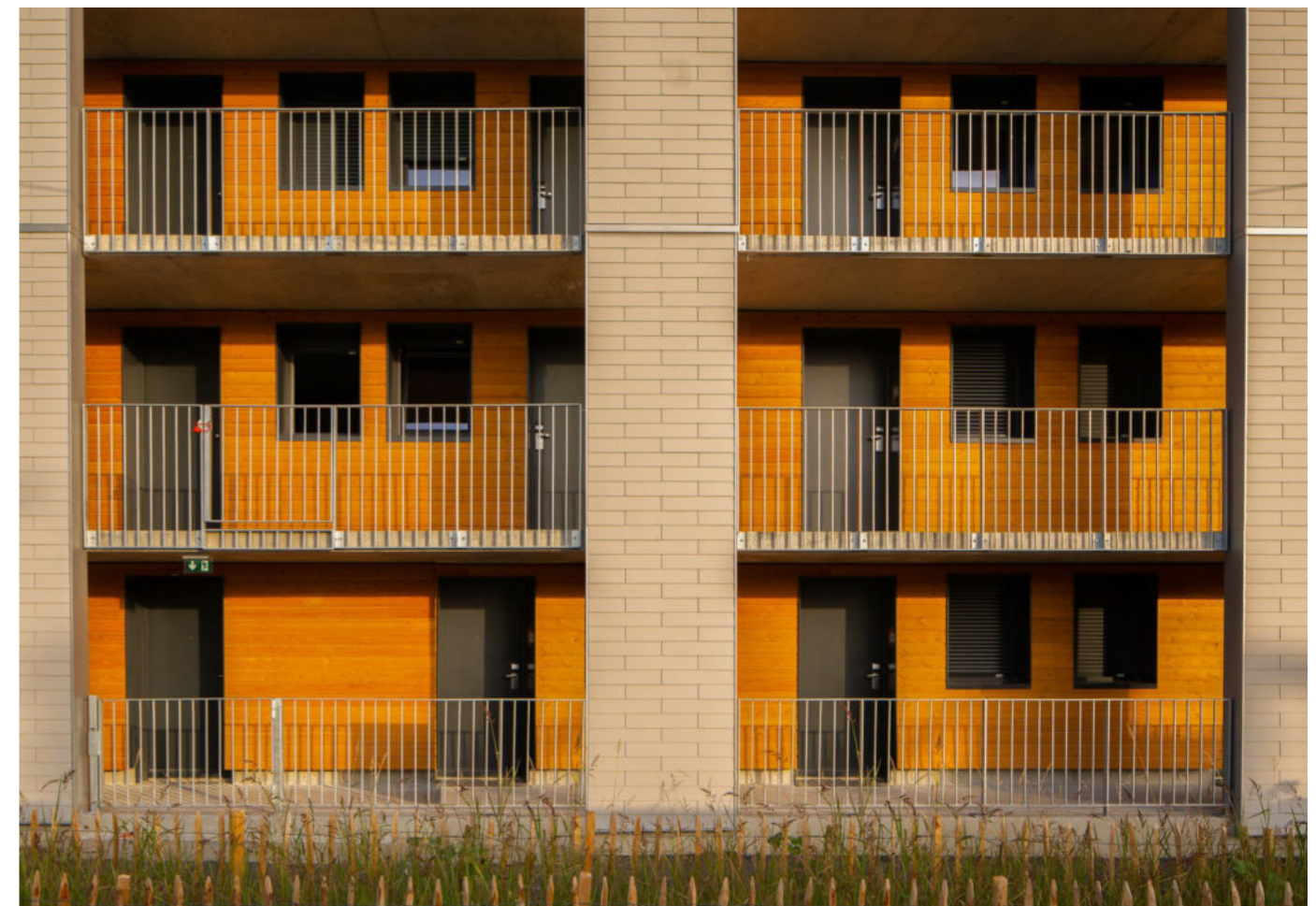
An unconventional and unique offering
An innovative alternative to traditional standards
User friendliness at the heart of the project
A new "hybrid" hotel concept
A socially responsible and sustainable hotel project

ENVIRONMENTAL PERFORMANCE

Photovoltaic panels
Connection to the urban geothermal network
Natural ventilation
Rainwater recovery
Close to public transport and soft mobility encouraged.

Located in the Bastide Niel ZAC (a mixed urban development zone), an eco-neighbourhood designed by architecture firm MVRDV, the eco-building has a unique shape designed in response to the massing of the masterplan. Openings, access balconies, and interior gardens give life to this monolithic block.

Friendliness, sharing and simplicity are at the heart of the design concept for this hotel, whose non-standard range of room types includes rooms for the individual traveller or family, studio apartments, as well as a bar, restaurant and offices.



Typology

Hotel

Surface area

2,450 m² of floorspace

Construction cost

4.3 M€

Location

Bordeaux, France

Status

Competition 2016 - delivered 2019

Allocation mode

Private project management



Eklo Hotels - Bastide

Typology

Hotel

Construction cost

4.3 M€

Status

Competition 2016 - delivered 2019

Surface area

2,450 m² of floorspace

Location

Bordeaux, France

Allocation mode

Private project management
