

Simond

Headquarters and mountaineering equipment factory, surrounded by the exceptional beauty of the Mont Blanc landscape.

CLIENT

Decathlon Simond group

TEAM

Patriarche Group:
Patriarche (architect, scheduling, construction management and coordination, and High Environmental Quality [HEQ] standards)
Patriarche Ingénierie (general construction and cost assessment)
Partner:
Duverney

KEYPOINTS

Factory 4.0 design adapted to the mix of functions and interactions between operators and users; and flexibility and scalability of use.
Facades and complex structures
Nailed wall construction technique.

ENVIRONMENTAL PERFORMANCE

Energy recycling
BREEAM Rating - Good

AWARDS

Grand prix du SIMI 2020

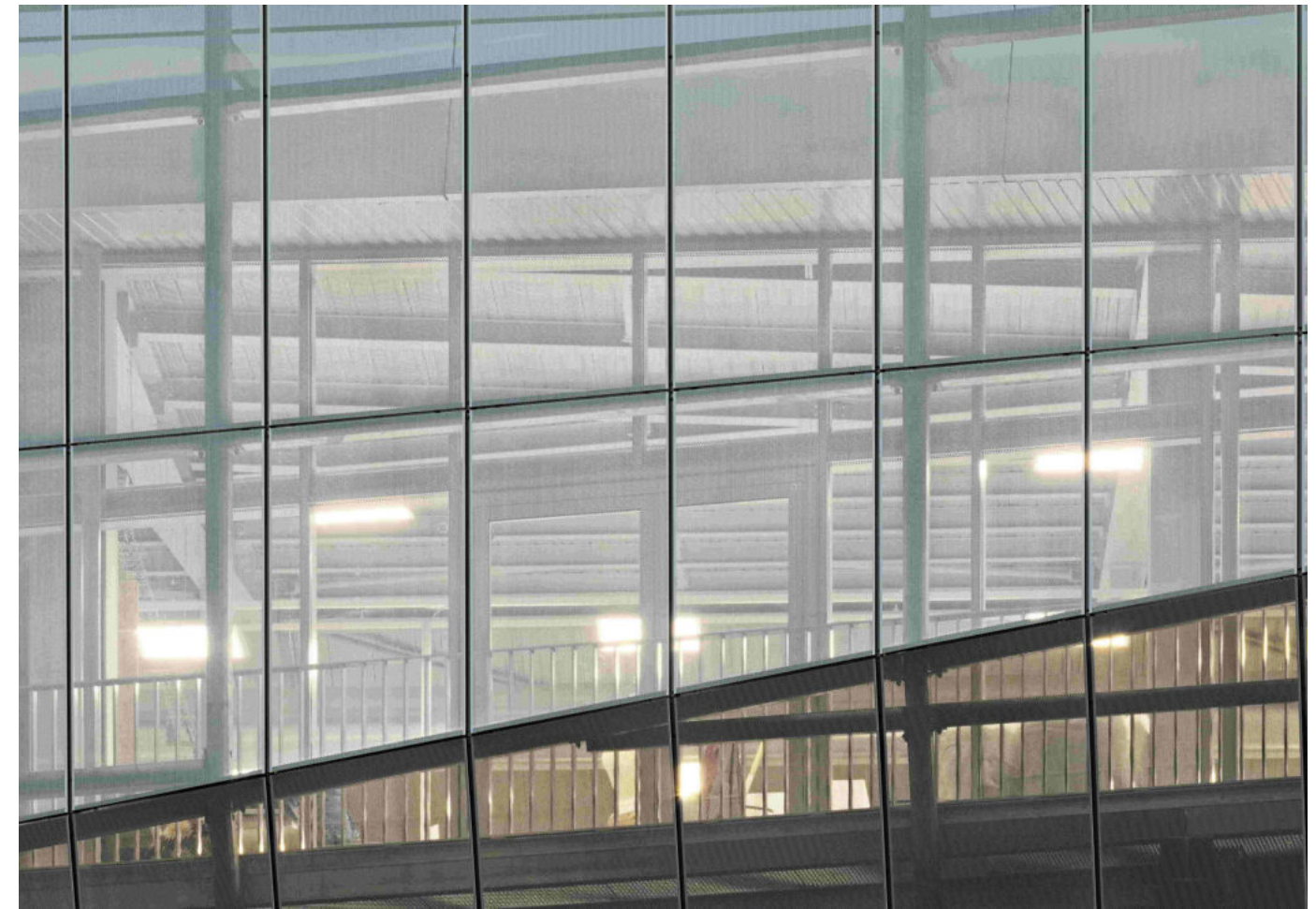


The Simond building, a showcase for local know-how in Chamonix, marries contemporary architecture, construction expertise, and cutting-edge services and industrial spaces. It expresses an uncompromising blend of tradition (Simond is almost two hundred years old) and forward thinking in the very birthplace of world mountaineering.

A dynamic space for research, innovation and production, it embodies the factory's commitment to preserving the know-how of making mountain equipment.

The materiality of the metal inside and outside the building was expressed as a reminder of the company culture and origins as a blacksmith's shop.

To build Simond, Patriarche faced many technical challenges, ranging from the steepness of the terrain to difficult weather conditions. At the same time, staff are guaranteed pleasing views from the building, and the visually striking building catches the eye of passers-by thanks to its complex and unusual shapes. Among other things, Simond is able to meet the challenges of Industry 4.0 by housing manufacturing workshops and research and development staff offices in a flexible way.



Typology
Manufacturing and services

Construction cost
3.6 M€

Status
Delivery 2020

Surface area
3,800 m² of floorspace

Location
Chamonix, France

Allocation mode
Private project management



Simond

Typology
Manufacturing and services

Construction cost
3.6 M€

Status
Delivery 2020

Surface area
3,800 m² of floorspace

Location
Chamonix, France

Allocation mode
Private project management
