

Le Phare (The Lighthouse)

Multi-purpose venue for up to 6,000 people.

CLIENT

Chambéry Métropole

TEAM

Patriarche Group:

Patriarche (architecture, interior design, Environmental Building Quality [EBQ], and BIM)
Patriarche Ingénierie (general construction and cost assessment)
Patriarche Creative (signage)

Partners

Arcora, GECC-AICC, Plantier, Rioualec, Echologos, and Les Eclaireurs

KEYPOINTS

Scalability and modularity.
Free flowing movement.
People flow management.
Durable materials.

ENVIRONMENTAL PERFORMANCE

Natural ventilation via glass roof.
Solar thermal production.
Photovoltaic collectors.
Geothermal energy using groundwater (water at 8°C): free-cooling.

The multi-purpose venue, which opened in January 2009, comprises a 6,000-seat space for sports events, cultural events and conferences, as well as a smaller 500-seat hall.

The functional elements of the building are specifically designed for a circular base. Designed as a glass ring encircling an elliptical shell, the lighthouse is a statement landmark building in the landscape. Large and geometric in design, the building then becomes an essential focal point for the regeneration of a mixed urban fabric.

Beyond the urban design context, the building is an efficient tool adapted to a complex programme. Designed with the idea that technology should disappear into the background, in favour of form and transparency, the building can be enjoyed from both inside and outside.

Typology
Sport, culture, Facilities, and graphic design

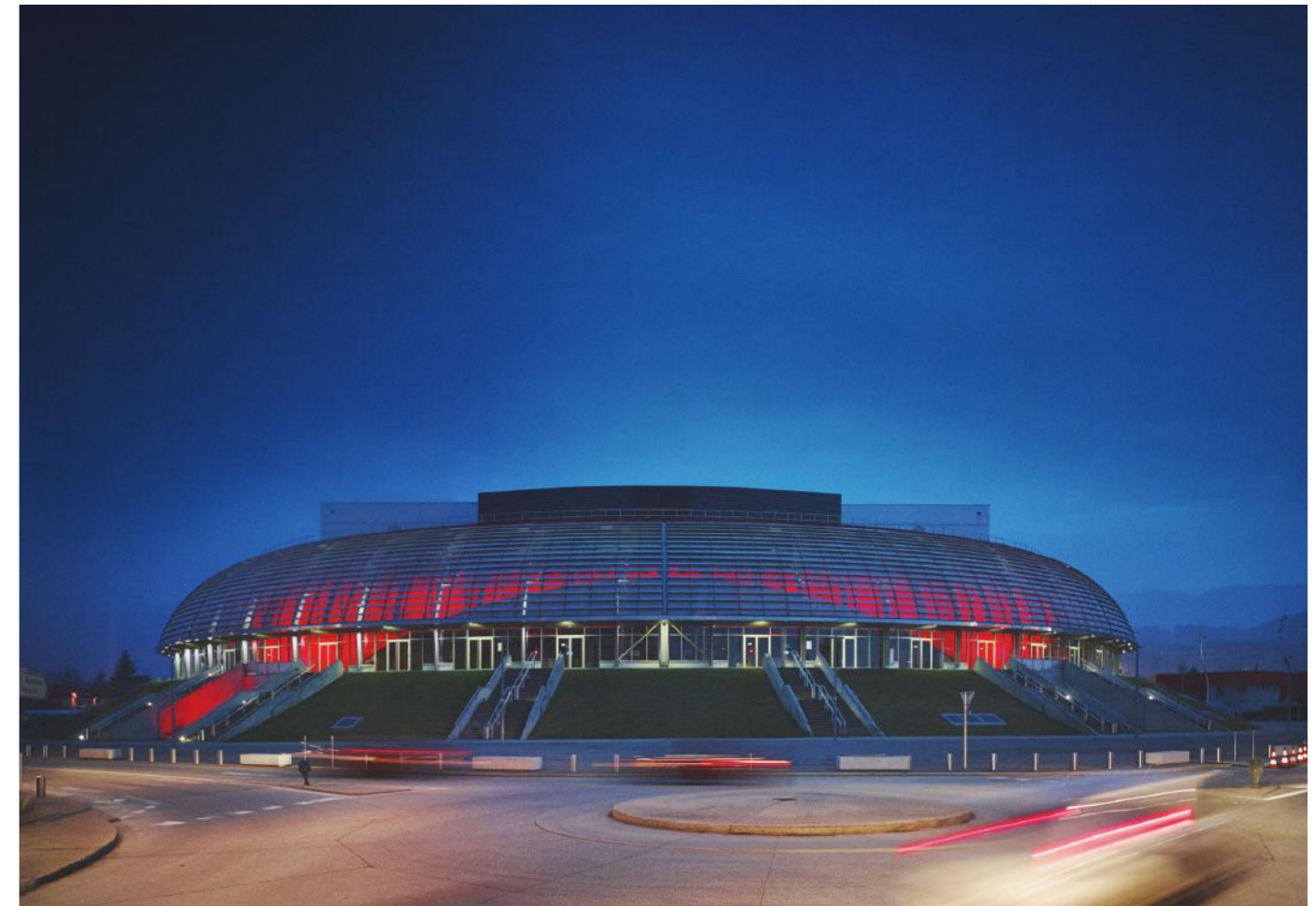
Surface area
20,440 m² of floorspace

Construction cost
35.3 M€

Location
Chambéry, France

Status
Delivered 2008

Allocation mode
Public Works Management



Intentions- bias

We have designed a complex with signs that symbolize its activity, like the technologies of the show: light, dynamism, transparency.



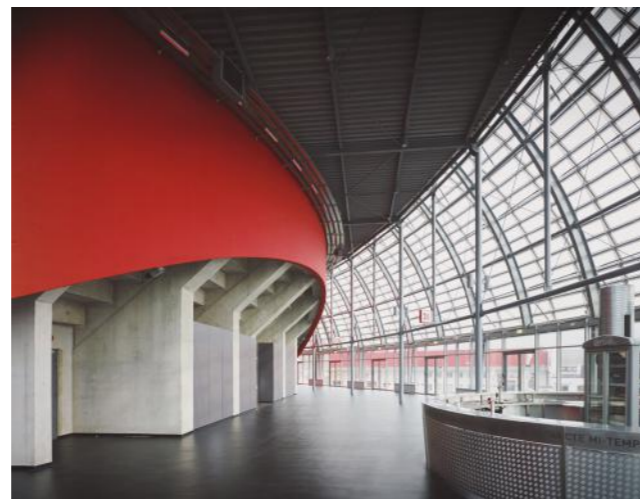
A low slope sets the stage for the large hall and its ambulatory, from which only the technical volume of the stage cage emerges, dressed in a metallic skin that plays with reflections.

Through this sphere of attraction, pole of festive crystallization, the city becomes a changing decor by a powerful lighting.

This "object", large geometric composition, becomes an essential nodal point of the landscape, a beacon in the city.

The glass ring becomes a screen of communication, with multiple transparencies, under which the ambulatory organizes the ballet of the public.

This magic that we knew in the fairground circuses, is reinterpreted here in a contemporary way as interesting from the inside as in its urban expression.



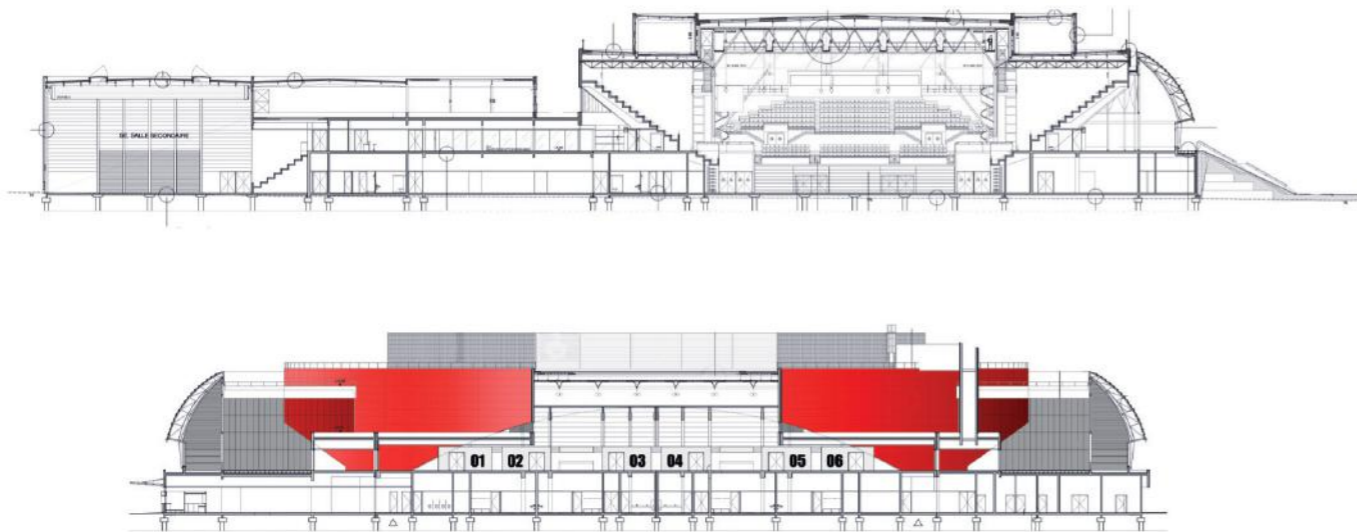
Traffic and materials

The plan organizes the functions by distributing open spaces, living spaces. Drawn on a significant number of patios and green spaces, the project finds in these aeration, a scale closer to living spaces and landscapes.

A network of circulation, treated like the streets of a city, connects the different functions. They are classified by level of protection and access to certain areas is prohibited. Within this network, the functions find their place in a clear flow logic.

The circular organization makes it possible to arrange the serving functions around the spaces served by the main rooms, limiting the length of the transfers. The artists' and sportsmen's area is located between the two rooms.

A network of circulation treated like the streets of a city connects the different functions.

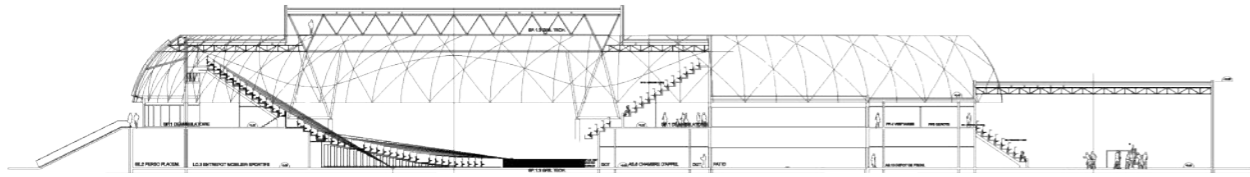


Materials

The architecture, although strongly emphasized by the landscaped embankment and the ring of glass and steel, remains sober and perennial. The materials used, metal, glass, concrete, have the required resistance to ensure the durability of the contemporary and timeless image of the large facility. The volumes of the annex rooms are clad with an elegant perforated metal cladding while the peripheral functions of the first floor are treated in finished concrete.

The ring consists of a natural aluminum-colored metal frame with a radiating design supporting clapboarded glass elements. The volumes of the annex room and the stage house are clad with an elegant metal cladding of aluminum zinc color with stamped impressions. The elliptical shell is clad with a large red plane cladding.

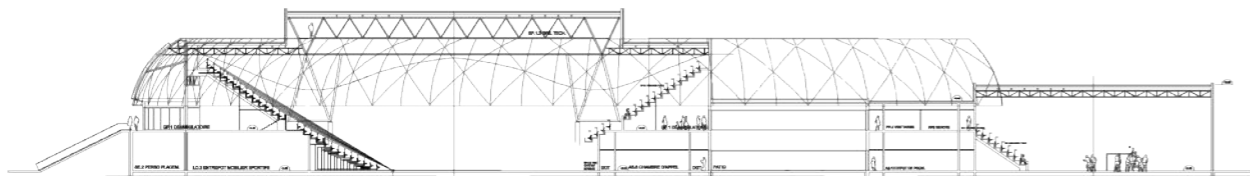
Staging



Show configuration:

8.7 cm extensions allow the necessary extra widths for the transverse aisles without interrupting the chain of telescopic bleachers.

Visibility conditions are satisfactory for all spectators, as the area installed flat is limited to 5 rows only in front of the stage.

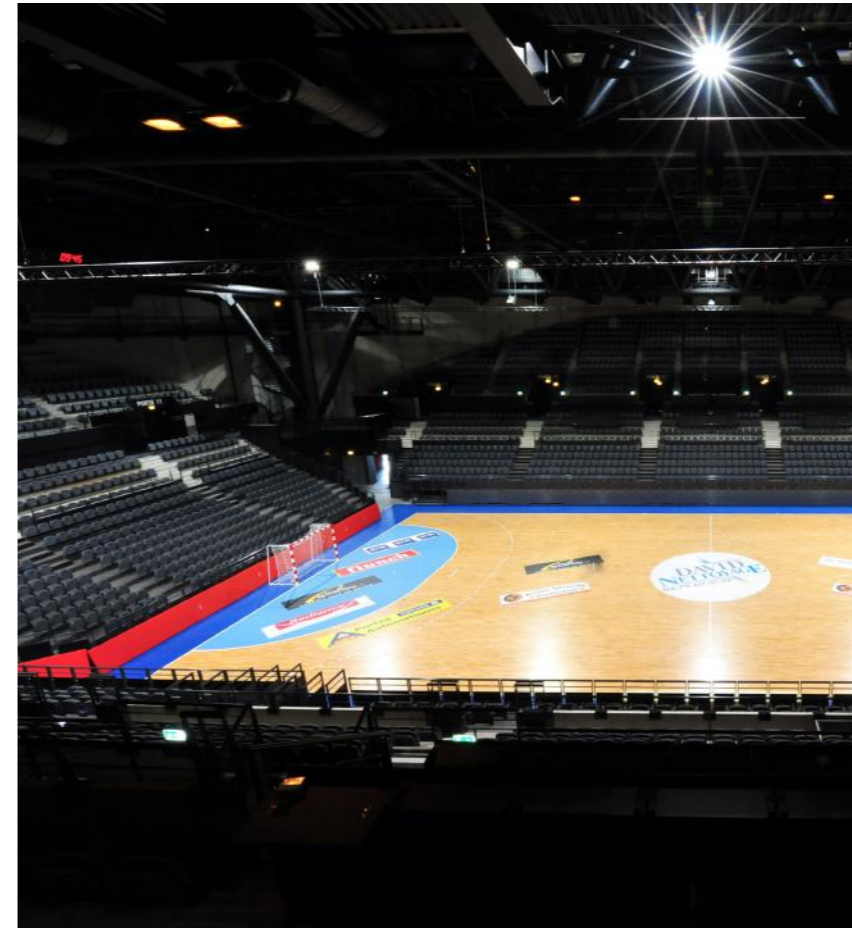


Handball and other sports configuration:

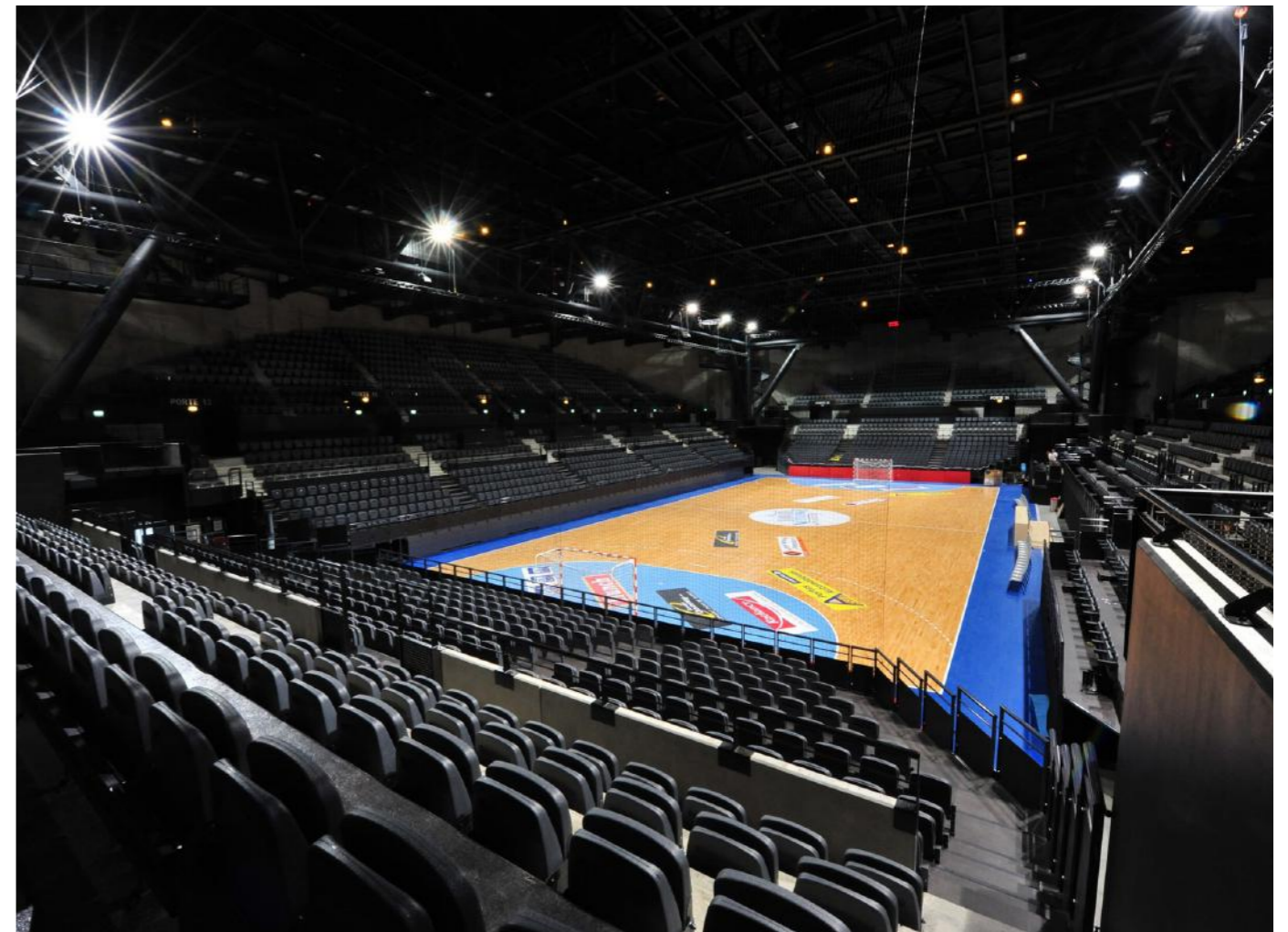
The nesting platforms are folded in groups of 2 or 3, so as to constitute bleachers of 52.5 to 26.2 cm height, compatible with the required visibility curve.

In the current state of the project, the height of the elementary platform, 17.5 cm at the most (except for the upper row), does not allow for the incorporation of seats.

The handball configuration therefore requires the manual installation of 6 rows of 80 chairs, i.e. 480 chairs, on one side of the hall only, while the other side can be equipped with automatic bleachers with integrated seats.



The Lighthouse is a chameleon project capable of handling transitions quickly and dramatically.



Signage



The signage of the Lighthouse was designed in osmosis with the architectural project. The graphic elements, deliberately understandable and aesthetically simple, allow for great legibility. This point is all the more important as spectators need to find their way in the crowd.



Typology
Sport, culture, Facilities, and graphic design

Surface area
20,440 m² of floorspace

Construction cost
35.3 M€

Location
Chambéry, France

Status
Delivered 2008

Allocation mode
Public Works Management
