

Biotech Development Center

A green setting conducive to research and development focused on biotechnologies.

CLIENT

Confidential

TEAM

Patriarche (Architecture, Interior architecture, Space planning, MEP Engineering, EBQ, Cost, BIM, Graphic design, Communication)
Autumn | Patriarche (Main contractor)
Myah | Patriarche (Main interior fit-out contractor)
Partners:
Tecta 73, Duverney Ingénierie, BG Consulting Engineers, Amstein + Walthert, Oxy Ingenierie, Ipem, Isiitech
Credits: ©Romuald Nicolas

KEYPOINTS

Clean rooms for grade C and D biomanufacturing.
Flexlab for research and development.
L2 laboratory.
Bioclimatic liquid crystal façade.
Cold rooms -70°C/-40°C.
WFI water production by membrane process (world first).
BIM Level 4.

ENVIRONMENTAL PERFORMANCE

"Minergie" Label.
Swiss thermal regulation framework.
Photovoltaic production plant.
LED glazing for solar control (innovation).

A new biotech development centre for a leading science and technology company, dedicated to research and manufacturing of new medicines for patients with unmet medical needs.

The facility consists of a building with a total of 16,000 m² of development space available to a multidisciplinary team of some 250 employees, including two platforms organised in an innovative flexlab, a pilot plant and clean rooms for production.

The centre is equipped with the most advanced digital and technological solutions, especially for continuous manufacturing (upstream and downstream processes) and laboratory automation (robotisation).

It offers a flexible infrastructure to easily adapt to emerging needs and technological changes, as well as open workspaces for collaboration, creativity and innovation.

Everything is designed to meet the highest international standards of quality, environment, health and safety.



Typology
R&D/Laboratories, Offices

Surface area
16,000 m² of floorspace

Construction cost
Investments of 250 M€, 80 M€

Location
Corsier-sur-Vevey, Switzerland

Status
Delivered 2022

Allocation mode
Private project management

Technology innovation

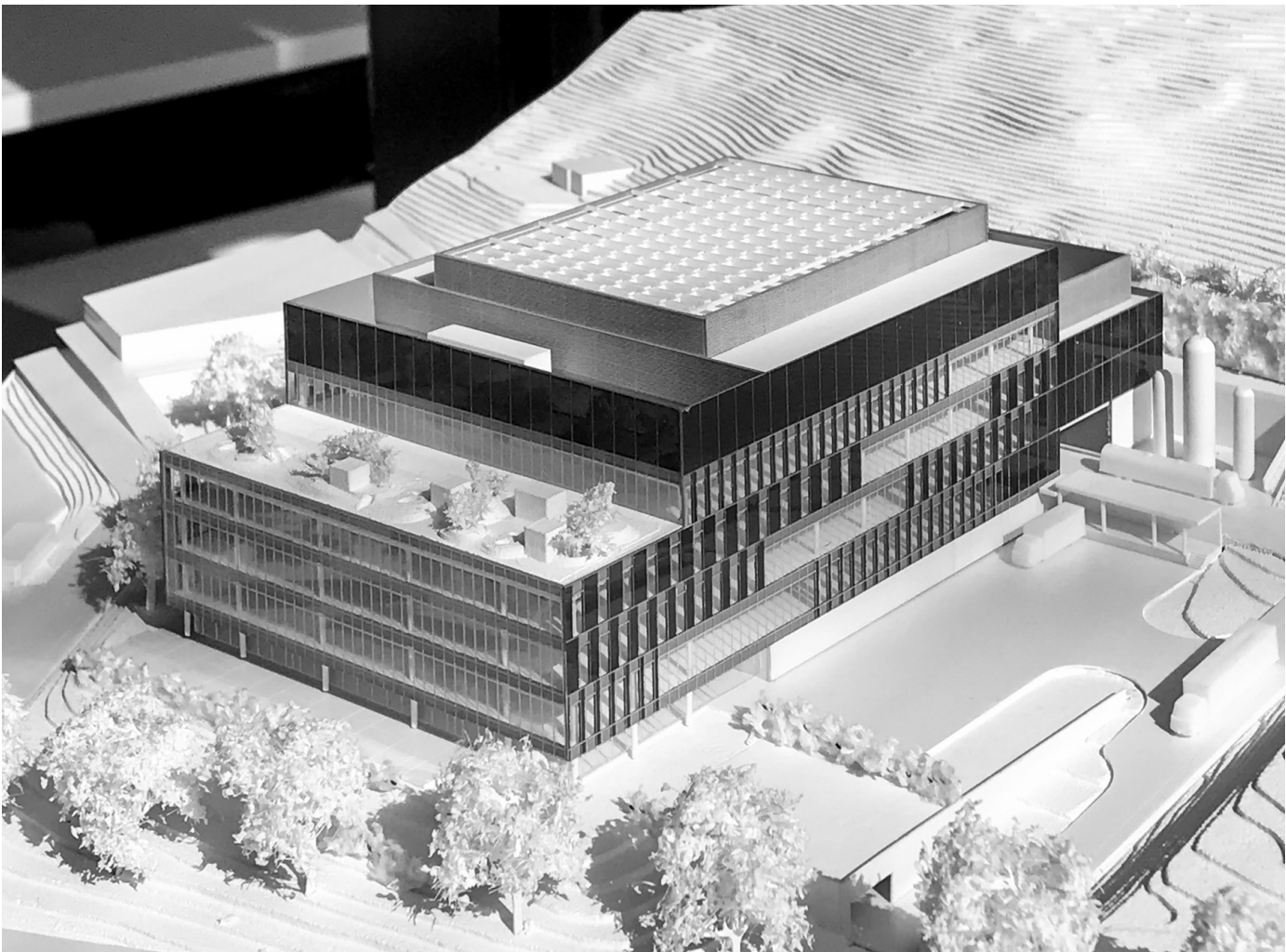


The building is integrated into the landscape and interacts with the natural composition of the hillside. The facades are clad with pre-industrialized panels that strongly mark the horizontal lines.

The rhythmic differences between the solid and glazed panels compose the two side facades, playing with the effect of the slope of the land. The envelopes are extremely efficient while offering an abundance of natural light and exceptional views of Lake Geneva and the Alps.

Eyrise® innovative dynamic liquid crystal glazing allows for unprecedented solar control in a highly efficient energy management framework.

Priority is given to renewable energies with a high proportion of electricity from an on-site photovoltaic system.





Biotech Development Center

Typology	Construction cost	Status
R&D/Laboratories, Offices	Investments of 250 M€, 80 M€	Delivered 2022
Surface area	Location	Allocation mode
16,000 m² of floorspace	Corsier-sur-Vevey, Switzerland	Private project management