

Linklab

At the crossroads of innovation in new ways of working, Linklab is a building focused on quality of use and environmental performance.

CLIENT

Groupama (investors)

TEAM

Patriarche Group:
Patriarche (urban design, architecture)
Patriarche Engineering (engineering)
Patriarche Creative (graphic design)
Hank (economic strategy)
Myah (Furniture)
Walter (co-working)
Bart (promoteur)
Partners:
Telt, Inddigo, ENDIS, ALBIOMA

KEYPOINTS

Active ground floor (commercial and restaurants).
Divisibility - flexibility of the office space.
Panoramic top floor.
Smart building (solar, electric recharge).

ENVIRONMENTAL PERFORMANCE

NF (French Standard) Tertiary Sector Buildings – HPE Label, performance level EFFINERGIE+2013
Achievement of Carbon Level 1
Health and comfort: priority given to air quality, natural light and summer comfort.

Linklab is a pioneering tertiary project in the La Cassine station area in Chambéry. A mixed-use building with shops and services on the ground floor. The project stimulates and explores all the new ways of organising work and the associated real estate services.

The project, designed with curves and porous ground floor,

highlights all the qualities of the site (multi-orientation, views, bioclimatic conditions) while promoting a rigorous spatial organization allowing for flexibility and evolutivity of the spaces over time.

Entirely designed and developed by the Patriarche group (notably through its subsidiaries Bart and Walter), the project is a demonstrator for new ways of designing tomorrow's highly digitalized work spaces covered by an extended service offer and favouring quality of use over formal considerations.

This bioclimatic, ultra-economical building has been awarded the NF (French Standard) Tertiary Sector Buildings Label HPE, EFFINERGIE+2013 performance level, enabling it to achieve carbon level 1 and energy level E2 and E3 depending on the building.

Typology	Construction cost	Status
Offices	18.3 M€	Delivery 2022
Surface area	Location	Missions
10 000 m² of floorspace	Chambéry, France	Design, Production, Promotion



Principal ideas - Concept

The site is part of an ambitious urban project, the aim being to transform this sector, which is intersected by infrastructures, into a new mixed-use centre with a strong character.

The creation of connecting roads at the level of the “natural ground” and a network of public spaces all contribute to the emergence of an innovative, mixed neighbourhood, capable of ensuring urban and programmatic continuity.

In this urban vision, the Cassine Chantemerle site occupies a singular place in contact with the railway line and in the immediate vicinity of the station.

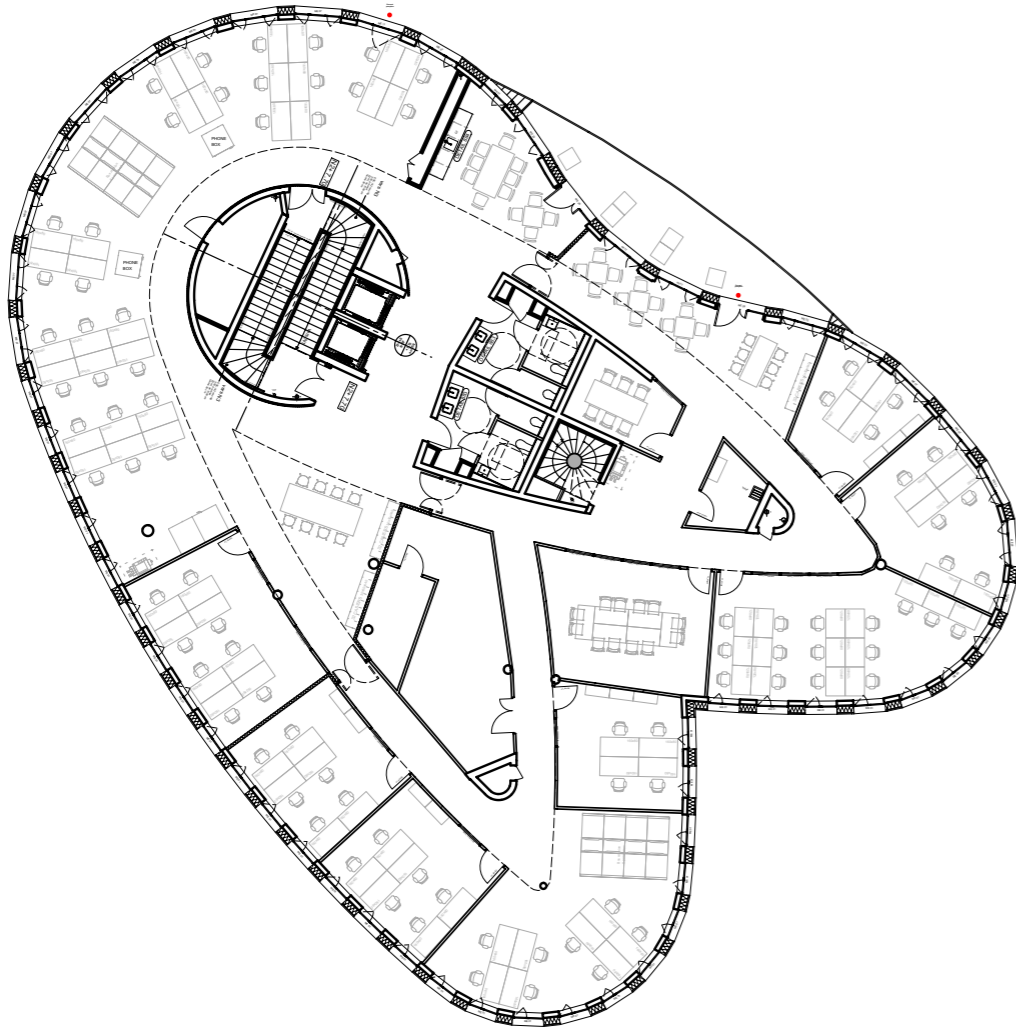
Linklab is a pioneering project in this district undergoing conversion. It is a marker of the district's programmatic and environmental ambition.



In order to respond to this specific spatial condition, the project is designed as two intertwined and curved buildings that face all the façades of the future district.

The porous ground floor, offering crossings in the extension of the public space, makes it possible to animate the ground floor programmes (shops, restaurants, services) while making a nod to the “historic traboules of Chambéry”.

Principal ideas - Concept



Linklab is organised around a central, ultra-functional core, a rigorous spatial organisation that allows for flexibility and scalability of the spaces over time.

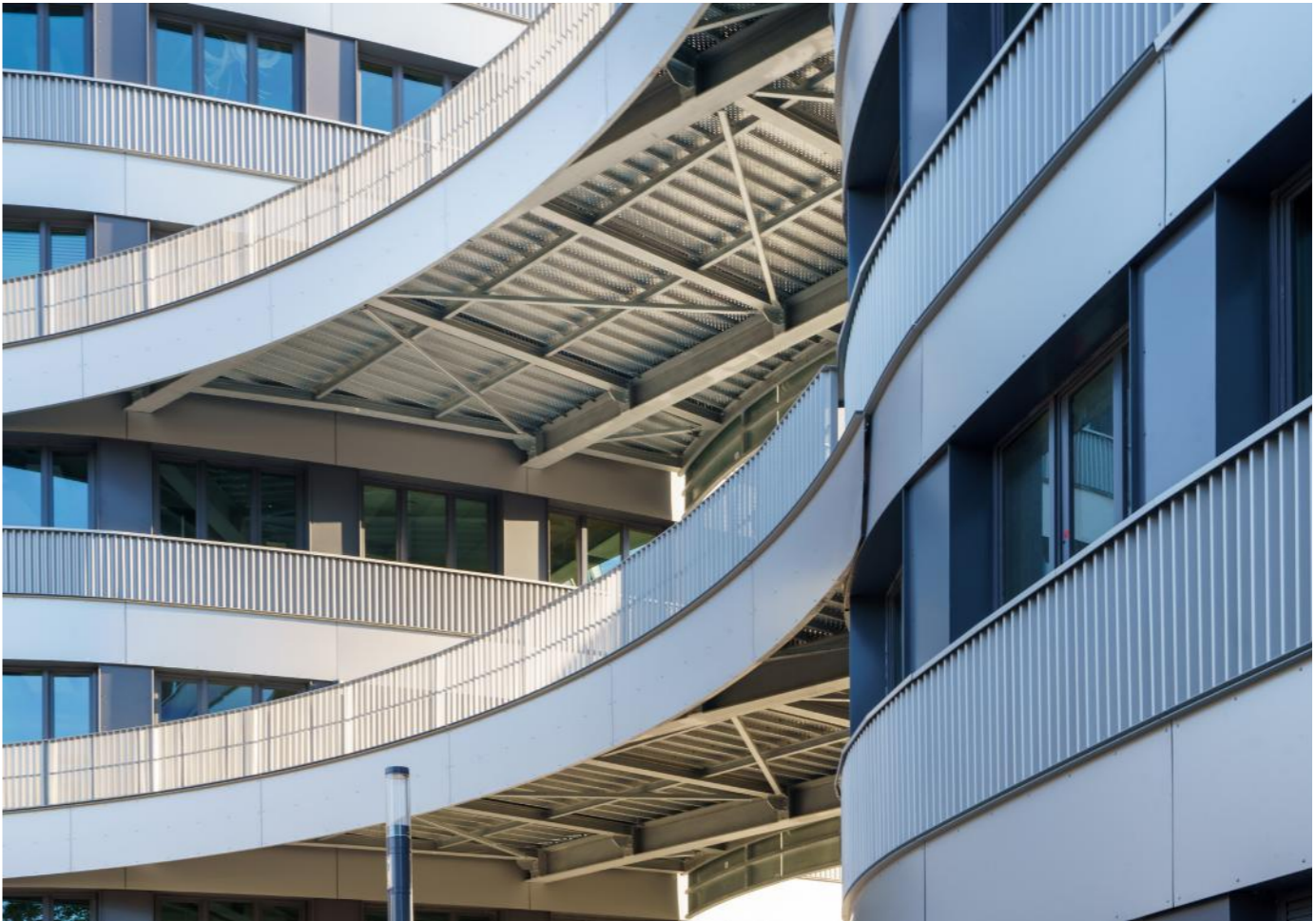
The looped circulation system makes movement within the office floors easier. The office floors are also largely glazed, providing abundant light for work spaces, a source of well-being and productivity, and maximum working comfort.

The openings onto numerous outdoor spaces (terraces, rooftops, walkways) also contribute to the well-being of the occupants and reveal views of the Chambéry landscape.



Raw materials, visible networks, to offer future tenants multiple possibilities of appropriating the spaces.







Linklab

Typology	Construction cost	Status
Offices	18.3 M€	Delivery 2022
Surface area	Location	Missions
10 000 m² of floorspace	Chambéry, France	Design, Production, Promotion